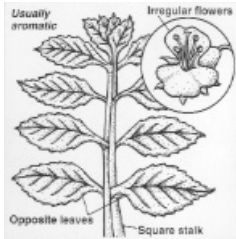


## Patterns in Plants: A Botany Lesson

### Part A: Eight Core Plant Families (easy to identify and widespread)

Example: *Hibiscus*. **Family:** Mallow. **Latin Name:** Malvaceae. **Pattern:** 5 separate petals, fused stamens around pistil.

**Examples:** okra, hollyhock. **Number of Species:** 1500. **Quality:** mucilaginous. **Cautions:** greens and flowers most edible.



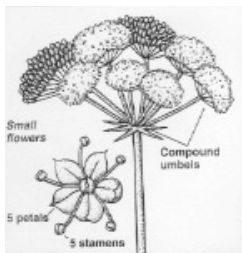
1. Family: \_\_\_\_\_ Latin Name: \_\_\_\_\_

Pattern: \_\_\_\_\_

Examples: \_\_\_\_\_

# of Species: \_\_\_\_\_ Quality/Taste: \_\_\_\_\_

Cautions: \_\_\_\_\_



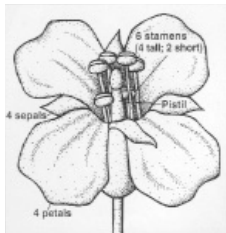
2. Family: \_\_\_\_\_ Latin Name: \_\_\_\_\_

Pattern: \_\_\_\_\_

Examples: \_\_\_\_\_

# of Species: \_\_\_\_\_ Quality/Taste: \_\_\_\_\_

Cautions: \_\_\_\_\_



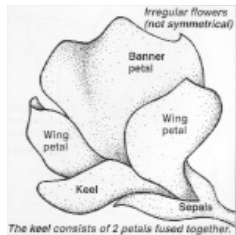
3. Family: \_\_\_\_\_ Latin Name: \_\_\_\_\_

Pattern: \_\_\_\_\_

Examples: \_\_\_\_\_

# of Species: \_\_\_\_\_ Quality/Taste: \_\_\_\_\_

Cautions: \_\_\_\_\_



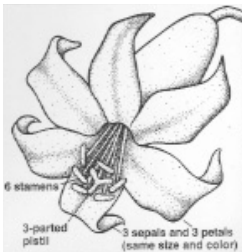
4. Family: \_\_\_\_\_ Latin Name: \_\_\_\_\_

Pattern: \_\_\_\_\_

Examples: \_\_\_\_\_

# of Species: \_\_\_\_\_ Quality/Taste: \_\_\_\_\_

Cautions: \_\_\_\_\_



5. Family: \_\_\_\_\_ Latin Name: \_\_\_\_\_

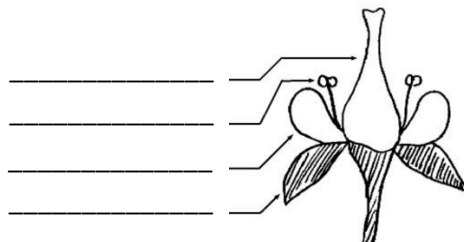
Pattern: \_\_\_\_\_

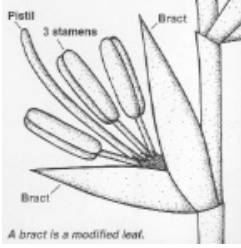
Examples: \_\_\_\_\_

# of Species: \_\_\_\_\_ Quality/Taste: \_\_\_\_\_

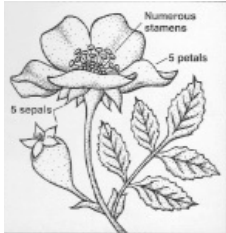
Cautions: \_\_\_\_\_

Simple Flower Structure:

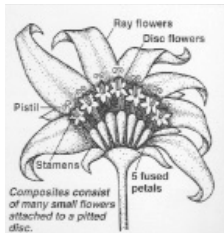




6. Family: \_\_\_\_\_ Latin Name: \_\_\_\_\_  
 Pattern: \_\_\_\_\_  
 Examples: \_\_\_\_\_  
 \_\_\_\_\_  
 # of Species: \_\_\_\_\_ Quality/Taste: \_\_\_\_\_  
 Cautions: \_\_\_\_\_

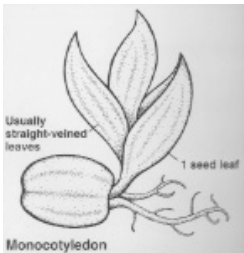


7. Family: \_\_\_\_\_ Latin Name: \_\_\_\_\_  
 Pattern: \_\_\_\_\_  
 Examples: \_\_\_\_\_  
 \_\_\_\_\_  
 # of Species: \_\_\_\_\_ Quality/Taste: \_\_\_\_\_  
 Cautions: \_\_\_\_\_

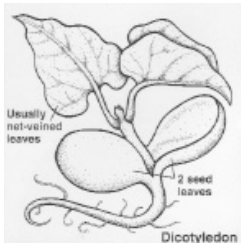


8. Family: \_\_\_\_\_ Latin Name: \_\_\_\_\_  
 Pattern: \_\_\_\_\_  
 Examples: \_\_\_\_\_  
 \_\_\_\_\_  
 # of Species: \_\_\_\_\_ Quality/Taste: \_\_\_\_\_  
 Cautions: \_\_\_\_\_

**Part B: What kind of flowering plant?**



**MONOCOT**  
 Families: \_\_\_\_\_ # of Species: \_\_\_\_\_  
 Pattern: \_\_\_\_\_  
 Examples: \_\_\_\_\_  
 \_\_\_\_\_



**DICOT**  
 Families: \_\_\_\_\_ # of Species: \_\_\_\_\_  
 Pattern: \_\_\_\_\_  
 Examples: \_\_\_\_\_  
 \_\_\_\_\_

**Part C: Identify new flowers**

Pattern: \_\_\_\_\_  
 Family: \_\_\_\_\_ Species: \_\_\_\_\_

**Extra Credit:** What are the names of the five card games demonstrated in the video?

This worksheet may be photocopied for classroom use.  
 Illustrations adapted from *Shanleya's Quest: A Botany Adventure for Kids ages 9 to 99*  
 and *Botany in a Day: The Patterns Method of Plant Identification* by Thomas J. Elpel  
 with permission from HOPS Press, LLC – [www.HOPSPress.com](http://www.HOPSPress.com)